

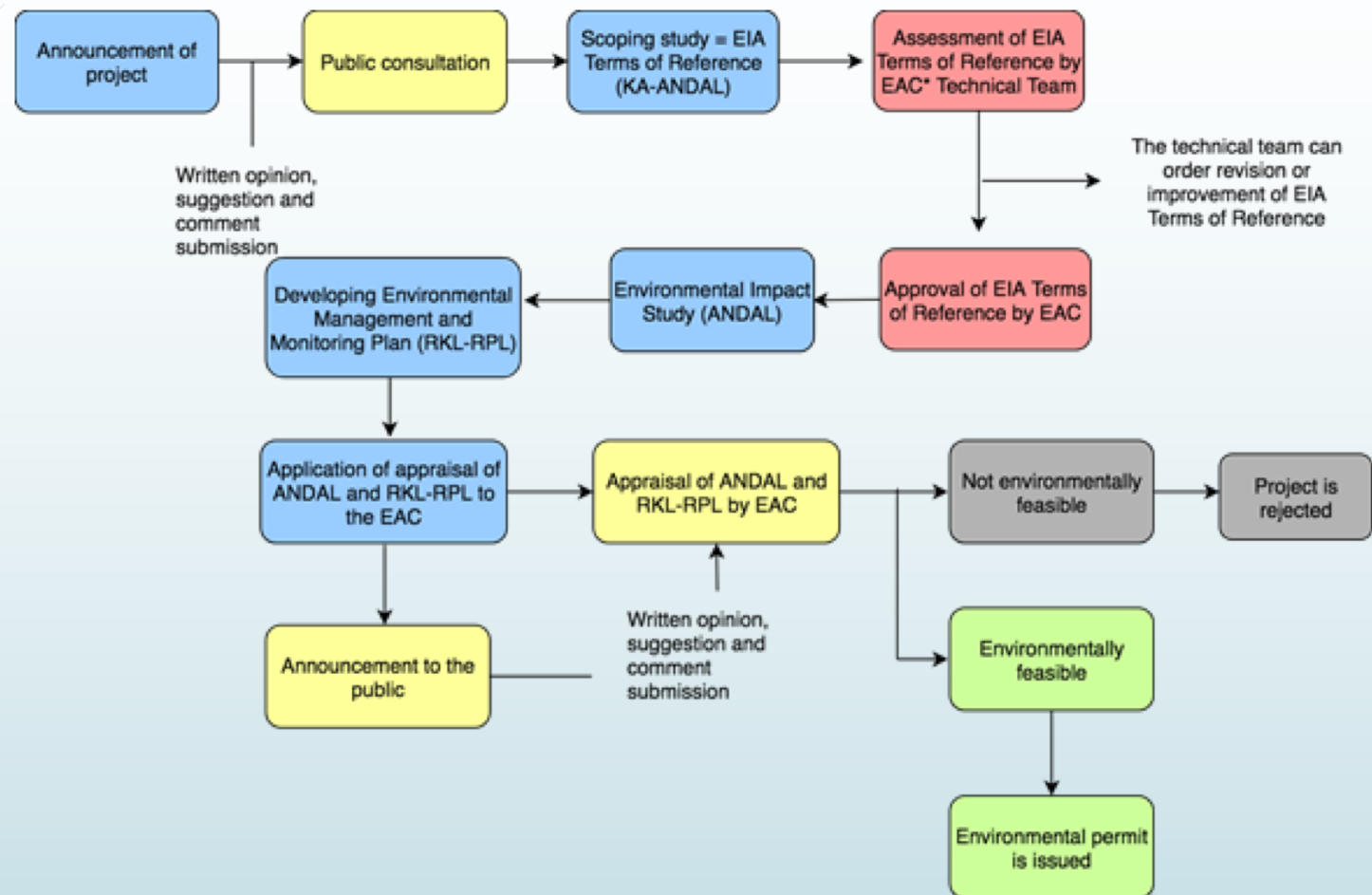


3 FEATURES OF PUBLIC PARTICIPATION IN INDONESIA EIA SCHEME

RIKA FAJRINI

INDONESIAN CENTER FOR ENVIRONMENTAL LAW

Indonesia EIA Procedure





SELECTED FEATURES OF PUBLIC PARTICIPATION

Broad range of
public
participants

Strong
consequence
on lack of public
participation

Community's
representative in
EIA Appraisal
Committee



(1) Broad range of public participants

Affected communities

- Directly affected (both positively and negatively)
- Exist in the EIA study area (social boundaries)

Environmentalists

- Not affected
- Those who care about the environment

All parties who will be affected by the decision in EIA

- Affected
- Exist outside the EIA study area



(2) Strong consequence on lack of public participation

Mandatory requirement in EIA scoping study (KA-ANDAL) appraisal

- Result of public participation (consultation and written submission) shall be incorporated/attached in KA-ANDAL
- Absence of public participation result in KA-ANDAL will make the scoping study rejected by technical team in EIA Appraisal Committee

Ground for filing lawsuit against the permit

- Lack of public participation can be a legal reason to argue that EIA is procedurally defect thus the environmental permit shall be revoked



(3) Community's representative in EIA Appraisal Committee

EIA Appraisal Board Committee consist of:

- a. environmental agency;
- b. relevant technical agency;
- c. expert in the knowledge of types of undertakings and/or activities that are being assessed
- d. Affected community's representatives**
- e. Environmental organization



(3) Community's representative in EIA Appraisal Committee

Pointers:

- Affected community chose their representatives to be the member of EIA Appraisal Committee
- The election is done along with public consultation
- Number of representatives are varied, decided proportionally and taking into account the interest they represent
- Result of representatives election is formalized in the form of agreement letter/power of attorney letter
- EIA initiator deliver the result of representative election to the EIA Appraisal Committee



(3) Community's representative in EIA Appraisal Committee

The Challenge : How loud
is their voice to be listened
to?

(3) Community's representative in EIA Appraisal Committee

Success story:

Gombong Cement Mining Case (Kebumen, Central Java)



Lesson learnt:

- Counter scientific evidence from community